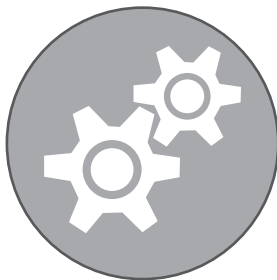


SPLASH DRONE 3/3+

Flight Controller Software Upgrade Instructions



To perform the firmware upgrade, you will need a microUSB to USB cable, such as the one supplied with the drone.

1. Go to [this link](#) and visit the Support/Downloads section

1a) Download the latest SplashDrone 3+ firmware.

1b) Download the SplashDrone Firmware Updater.

1c) Download the SplashDrone 3 Assistant software.

2. The Firmware Updater file is for the Windows operating system and is compressed. If your computer cannot open the file, you may need to download a decompression program such as WinRAR, WinZip or 7-Zip.

3. Open the file and expand the contents into a location of your choosing.

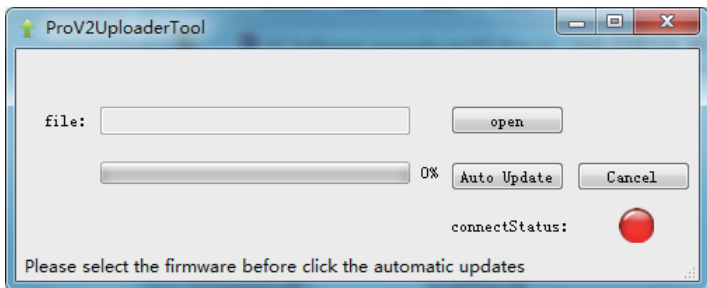
Then run the file that is called: **SD3+ FIRMWARE UPLOADER_.exe**

4. Plug the microUSB plug into the motherboard of the drone being careful to align the plug and socket properly.

5. Do not plug the battery into the drone.



6. The Updater program will open and appear as follows:

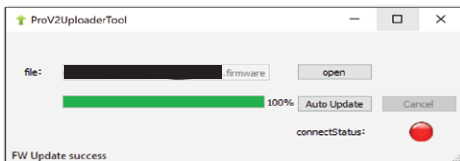


7. Click the **Open** button and select the firmware file that you downloaded from the SwellPro website.

8. Click the **Auto Update** button.

8a. If the drone is correctly connected, the **ConnectStatus** light will go green and the progress bar will show the level of completion. Firmware updating will take several minutes.

9. Ensure that the firmware update completes successfully. Otherwise, press **Auto Update** again. Close the application.



6. After the upgrade, unplug the drone from the computer.

It is now necessary to **recalibrate the Remote Controller**

7. Plug in the drone battery.

8. Plug the USB cable back into the drone and start the SplashDrone Assistant software.

9. Select the correct COM port and press the **Connect** button. As this port changes between different computers, try each COM port until the connection is successful. The **Device Status** at the bottom of the Assistant software screen shows if the drone is connected.

The screenshot displays the SplashDrone Assistant 3 software interface. At the top, the title bar reads "SplashDrone Assistant 3". Below the title bar, there is a "Port:" dropdown menu set to "COM10". To the right of the port menu are four buttons: "Disconnect" (with a red plug icon), "Overview" (with a laptop icon), "Basic" (with a keyboard icon), and "Adv" (with a gear icon). A "Download" button with a download icon is located in the top right corner.

The main content area is divided into two columns: "Basic" and "Advanced".

Basic

- Aircraft**: Aircraft Type: [X Four-Axis](#)
- RC**: RC Type: [S-BUS](#)
- Sensitivity**: Roll: [100.00%](#), Pitch: [100.00%](#), Yaw: [60.00%](#)
- Channel Detection**:
 - AIL: Left (slider), Right: 0
 - ELE: Up (slider), Down: 0
 - THR: Down (slider), Up: 0
 - YAW: Left (slider), Right: 0

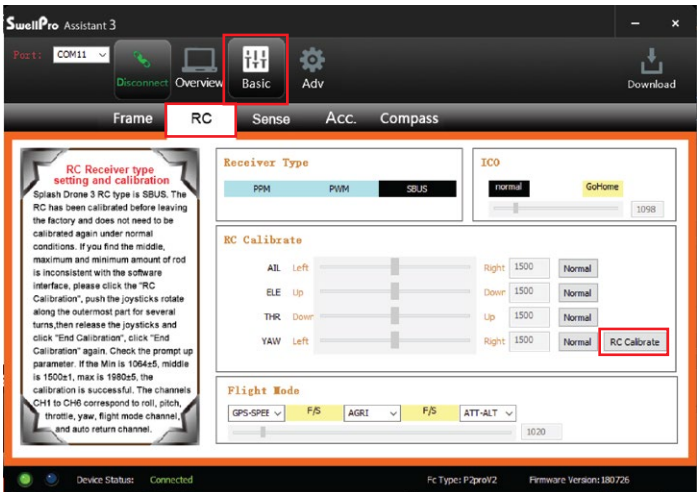
Advanced

- Voltage**:
 - Low-voltage Protection: [Auto-Landing](#)
 - Current Voltage: [0.14V](#)
 - 1st Level Protection: [14.60V](#)
 - 2nd Level Protection: [14.40V](#)
- GoHome**: GoHome Alt: [20M](#)
- Real-Time Data button

At the bottom of the interface, there is a "Device Status: Connected" indicator with a green light icon, and the text "Fc Type: P2proV2" and "Firmware Version: 180912".

10. Click on the **Basic** and **RC**

11. The Assistant software screen should appear as follows.



12. Click on the **RC Calibrate** button

11. The Assistant software will display a message "Please move all stick to max and min". Click **OK**.

12. Carefully move **both joysticks** to up and down and from side to side to their maximum limits.

13. Move the **left and right thumbwheels** (camera tilt and roll) to their maximum and minimum.

14. Operate the **four silver switches on the top of the remote** to each of their maximum and minimum positions. Do **NOT** operate the Smooth+ switches.

15. Click on the **End Calibrate** button.
16. The Assistant software will display a message “Please move all rockers to the middle.”
17. Click on the **Rocker Calibrate** button.
18. The Assistant software will display a table of calibration values. Click OK.
19. The Assistant software will display a message “Calibration Successful”. Click OK. If calibration is unsuccessful, carefully follow the steps above to recalibrate the remote controller.
20. The upgrade is complete. **Prior to flight**, please complete a **6-sided compass calibration and Accelerometer calibration** carefully following the instructions in the SplashDrone 3+ manual.

TROUBLESHOOTING

1. If you have trouble connecting to the drone to perform the update, please try another USB cable and another USB port on your computer.
2. If the updater has difficulty communicating with the drone, please try the following:
 - Access the “driver” directory in the uploader directory
 - Go to your OS version directory (Win7 or Win8) then run:
 - Open dpinst_x86.exe if you are running a 32-bits OS version; OR
 - Open dpinst_amd64.exe if you are running a 64-bits OS version
 - Follow the instructions.

SPLASH DRONE 3+

Software Upgrade

V2.2 2018.12